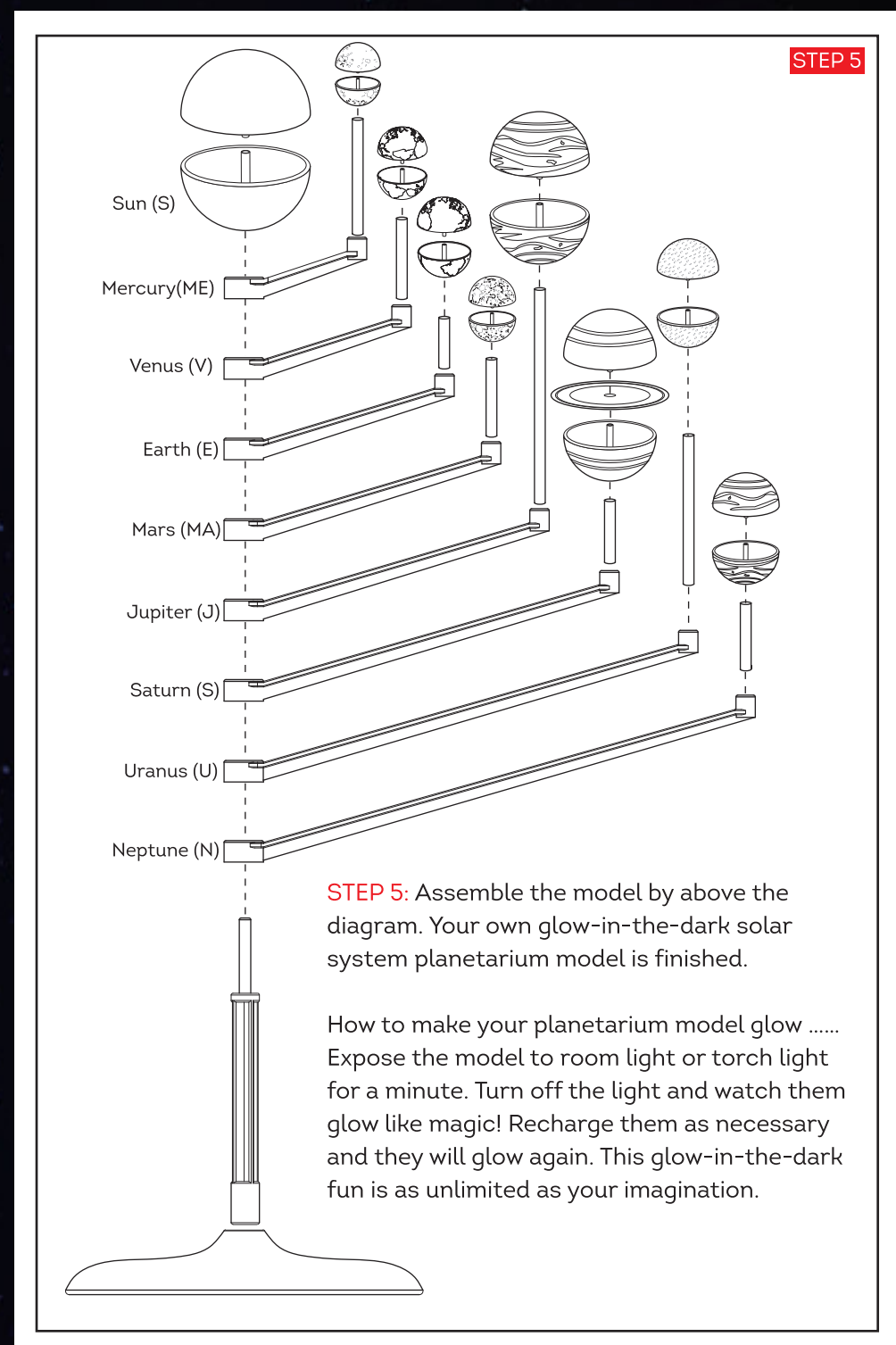
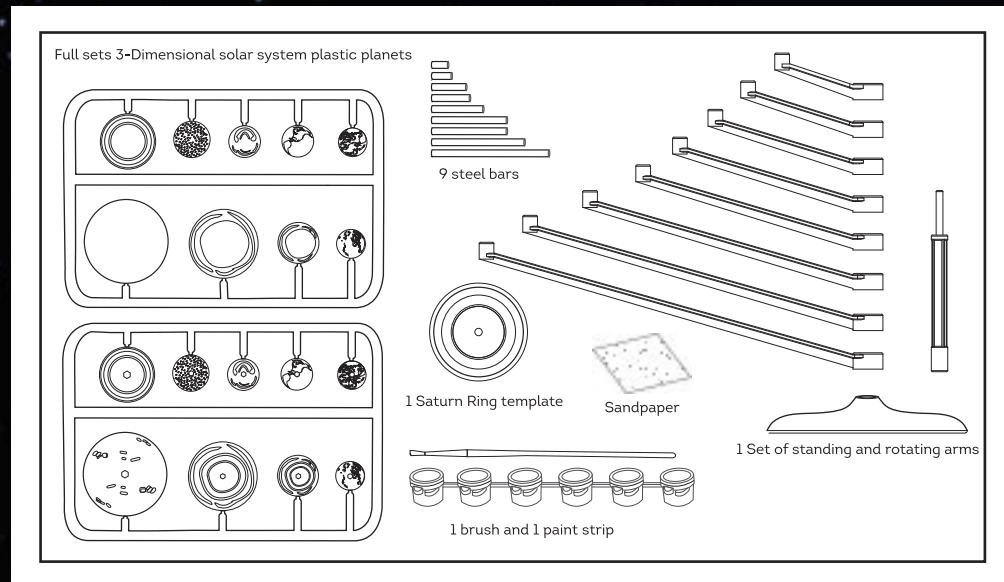


SOLAR SYSTEM

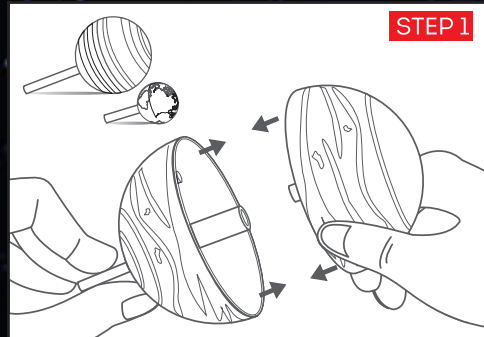
PLANETARIUM Explore the Universe! Assemble your own planetarium model. Paint and add highlights to create glow effect!

SAFETY MESSAGES:

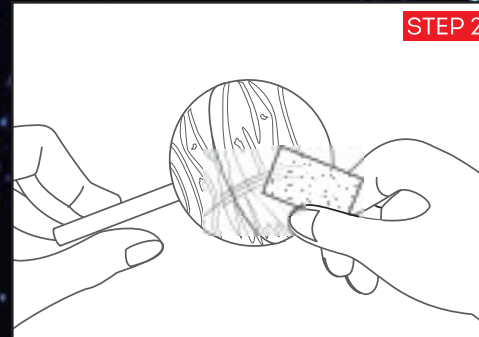
1. Since there are lots of pieces included in this kit, it is recommended that you only detach the plastic pieces from the holding frames when they are needed. This will help to keep the pieces in place.
2. Detach the plastic pieces from the frame with care. You may further polish the detaching points with a nail clipper and sandpaper. This will smoothen most uneven edges, facilitating an easy assembling.
3. Always work on a solid, level working surface and try to keep the area neat and clean.
4. If clothes are stained by paint then wash immediately. Dried paint may leave mild stains on clothing even when they are washed. Put on your apron or wear old working clothes as necessary.
5. This is only an inspirational science craft. Due to the requirement of balancing and the limitation of the desk model size, the proportion of the planet sizes and distances could not reflect the real proportion of the Solar System.



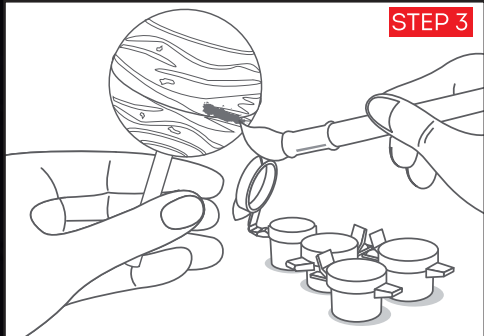
INSTRUCTIONS



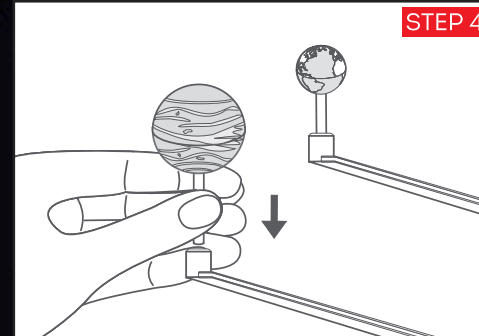
STEP 1: Snap the corresponding hemispheres together. (Remark: For Saturn, you need to insert the ring template in between the two hemispheres.) Their names are embossed on the circumgyrate arm. Check the STEP 5, they are circumgyrate arm flank.



STEP 2: Before you start painting, use the sandpaper provided to rub the surface. The paints apply better on coarse surfaces.



STEP 3: Paint the planets, refer to the package for ideas or see section following for more painting tips.



STEP 4: Insert the steel bars to the corresponding arms. (Remark: Name of the planets are also embossed on the arms)

PAINTING TIPS

Use your own colour scheme or refer to the illustration as shown on the package. For best results apply more than one layer of paint but wait until the first layer is dry before applying a second coat. It is always easier to paint a darker colour on a lighter colour background than the reverse. You may also add a small dishwashing detergent to the paint and mix it. This will help the paint apply on the surface better (especially for plastic surfaces). Follow the colour mixing guide below to produce more colours. (Some of the following guides may not apply to your kit if the required colours are not included.)

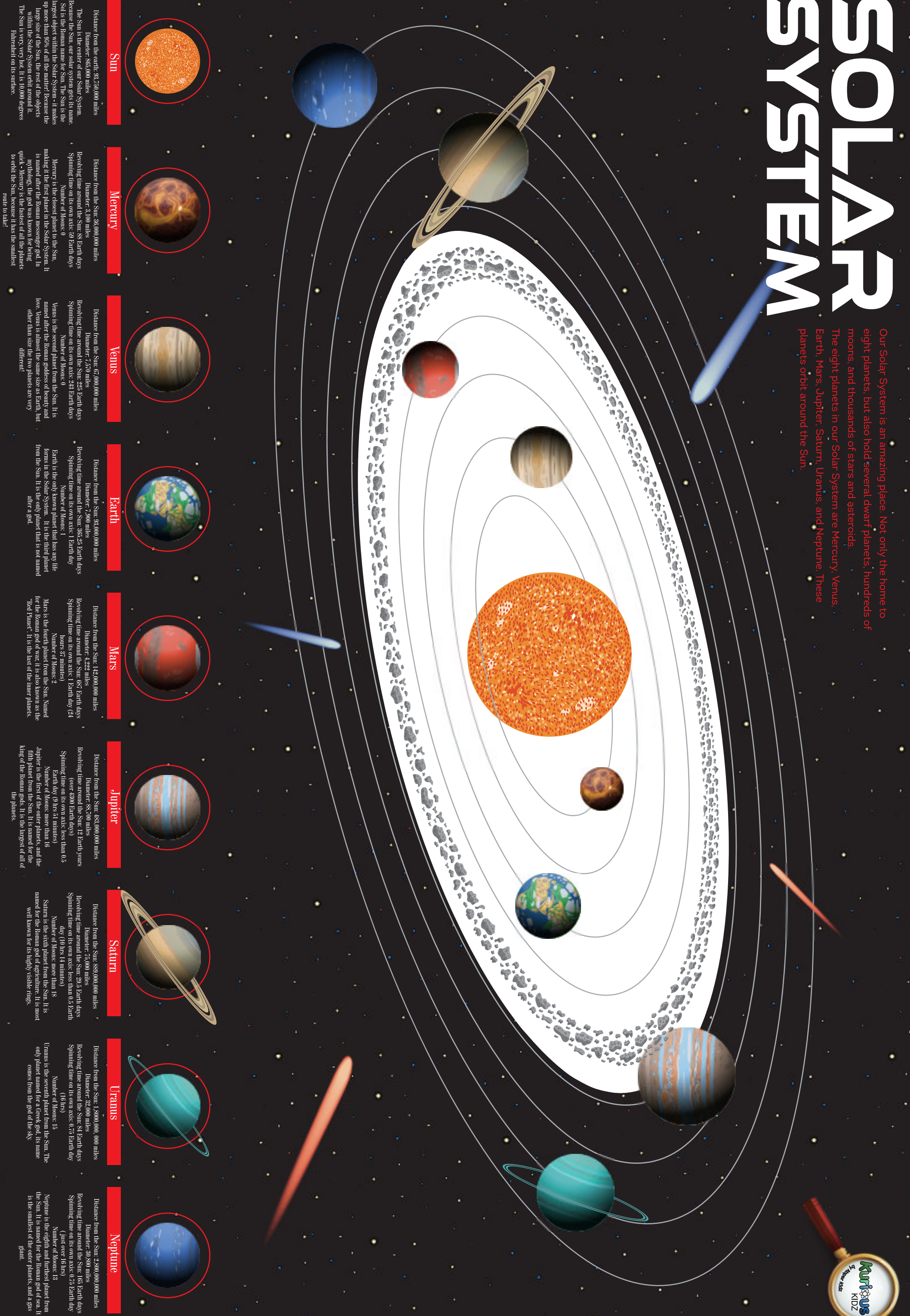
Yellow + Blue = Green
Blue + Red = Purple
Red + White = Pink
Yellow + Red = Orange
Red + Yellow + Little Black = Brown
Blue + White + Little Yellow = Turquoise

Mix the colour with White and Black to make them look lighter or darker respectively. Do not mix too many colours together as that will make final colour look muddy.
Glow Highlight - after the planet has been painted by the original colours, highlights some details with the glow paint. The details will glow in the dark like magic. Experiment mixing the glow paint with other colour paints. It gives the glow paint with a colour tint.
Always wash your paint brush before mixing or applying a new colour. Prepare small cup of water for this purpose. It is also a good idea to use a mixing tray for mixing paints. Close the pot lids tightly to prevent the paint from drying up. If the paint is dry, dilute it with a few drops of water.



SOLAR SYSTEM

Our Solar System is an amazing place. Not only the home to eight planets, but also hold several dwarf planets, hundreds of moons, and thousands of stars and asteroids. The eight planets in our Solar System are Mercury, Venus, Earth, Mars, Jupiter, Saturn, Uranus, and Neptune. These planets orbit around the Sun.



Planet	Distance from the Sun	Diameter	Revolution time around the Sun	Spinning time on its own axis	Number of Moons
Sun	0 miles	865,000 miles	-	-	-
Mercury	36,000,000 miles	3,100 miles	88 Earth days	58.6 Earth days	0
Venus	69,000,000 miles	7,600 miles	225 Earth days	243 Earth days	0
Earth	93,000,000 miles	7,900 miles	365 Earth days	24 hours	1
Mars	142,000,000 miles	4,200 miles	687 Earth days	24.6 hours	2
Jupiter	484,000,000 miles	86,000 miles	12 Earth years	9.9 hours	63
Saturn	887,000,000 miles	76,000 miles	29.5 Earth years	10.7 hours	62
Uranus	1,920,000,000 miles	35,000 miles	84 Earth years	10.7 hours	27
Neptune	2,800,000,000 miles	45,000 miles	165 Earth years	16.1 hours	14

